

SUMMER PROGRAM INBOUND & OUTBOUND MOBILITY

INTERNATIONALIZATION PROGRAM

FACULTY OF INDUSTRIAL MANAGEMENT

UNIVERSITI MALAYSIA PAHANG

Contents

ABOUT MALAYSIA.....	3
ABOUT PAHANG	3
UNIVERSITI MALAYSIA PAHANG (UMP).....	4
INTRODUCTION	5
FIM INTERNATIONALIZATION AGENDA.....	5
MOBILITY PROGRAM	6
CREDIT TRANSFER & COURSE EXEMPTION	8
VISA APPLICATION PROCEDURE	12
COURSES OFFERED IN FACULTY OF INDUSTRIAL MANAGEMENT.....	14
SUMMER PROGRAM.....	16
SUMMER PROGRAM BY CLUSTER	19
ACCOMODATION	20
CONTACT INFORMATION	21



ABOUT MALAYSIA

Malaysia is a country in Southeast Asia. The federal constitutional monarchy consists of 13 states and three federal territories, separated by the South China Sea into two similarly sized regions, Peninsular Malaysia and East Malaysia (Malaysian Borneo). Peninsular Malaysia shares a land and maritime border with Thailand and maritime borders with Singapore, Vietnam, and Indonesia. East Malaysia shares land and maritime borders with Brunei and Indonesia and a maritime border with the Philippines and Vietnam. Kuala Lumpur is the national capital and largest city while Putrajaya is the seat of the federal government. With a population of over 30 million, Malaysia is the world's 44th most populous country. The southernmost point of continental Eurasia, Tanjung Piai, is in Malaysia. In the tropics, Malaysia is one of 17 megadiverse countries, with large numbers of endemic species.



ABOUT PAHANG

Pahang is a large state in Peninsular Malaysia. It's known for its mountains, rainforests and beaches, including the white sands and coral reefs of Tioman Island off the east coast. The state capital, Kuantan, is a major seaport. In the west, the gentle hills of the Cameron Highlands include resorts, tea plantations and terraced farms, and the village of Fraser's Hill resembles an English hamlet.

UNIVERSITI MALAYSIA PAHANG (UMP)

Universiti Malaysia Pahang (UMP) was established by the Government of Malaysia on February 16, 2002. UMP was set up as a competency -based technical university which specializes in the fields of engineering and technology. As for research, UMP focuses on applied research and industrial projects to enrich the teaching and learning processes as well as to promote the commercialization of research products.

UMP Campus in Pekan

UMP main campus in Pekan began its operation in 27 July 2009. When construction is fully completed, the Pekan campus can accommodate up to a total of 10,000 students and 2,000 staffs. At present, the campus is the home for four engineering faculties and one centre, namely the Faculty of Electrical and Electronics Engineering, Faculty of Mechanical and Automotive Engineering Technology, Faculty of Manufacturing and Mechatronic Engineering Technology, Faculty of Computing and Centre for Modern Languages.

UMP Campus in Gambang

Situated in Gambang, near the East Coast Expressway, UMP is just 30km drive from Kuantan, with an area of 126 acres and can accommodate up to 5,000 students. UMP is strategically located in the East Coast Industrial Belt of Peninsular Malaysia - which hosts a large number of multinational corporations (MNCS) in the chemical, petrochemical, manufacturing, automotive and biotechnology industries. UMP students get extensive exposure to the latest development in the fields of engineering and technology. At present, this campus is the home for four faculties, one institute and two centres namely Faculty of Civil Engineering Technology, Faculty of Chemical and Process Engineering Technology, Faculty of Science and Industrial Technology, Faculty of Industrial Management, Institute of Postgraduates Studies, Centre for Mathematical Sciences and Centre for Human Sciences.



INTRODUCTION

Universiti Malaysia Pahang (UMP) offers a wide range of practical-based higher education programs in engineering and technology to produce competent engineers. The application-oriented curriculum which integrates theory and practice in the concept of a teaching factory emphasize experiential and action learning that is task-oriented and concentrates on problem-solving.

UMP focuses on applied research and industrial projects to enrich the teaching and learning processes while promoting the commercialization of the research products, thus exposing our students to the latest research and development activities in the industries. Indeed, UMP students experience to handle of state-of-the-art facilities that resembles those used in industries. Known for its "Teaching Factory" concept, students in UMP are taught by experienced faculties in a learning environment that prepares them for the real world. UMP is currently operating in two campuses in Pahang. Its Faculty of Mechanical Engineering and Faculty of Electric and Electronics Engineering are located in a resort-like campus of Pekan. The rest of the faculties, academic centers and Centers of Excellence are operating in Gambang, a town strategically situated in a rapidly growing petrochemical and biotechnology hub. The two campuses are about 40 km apart.

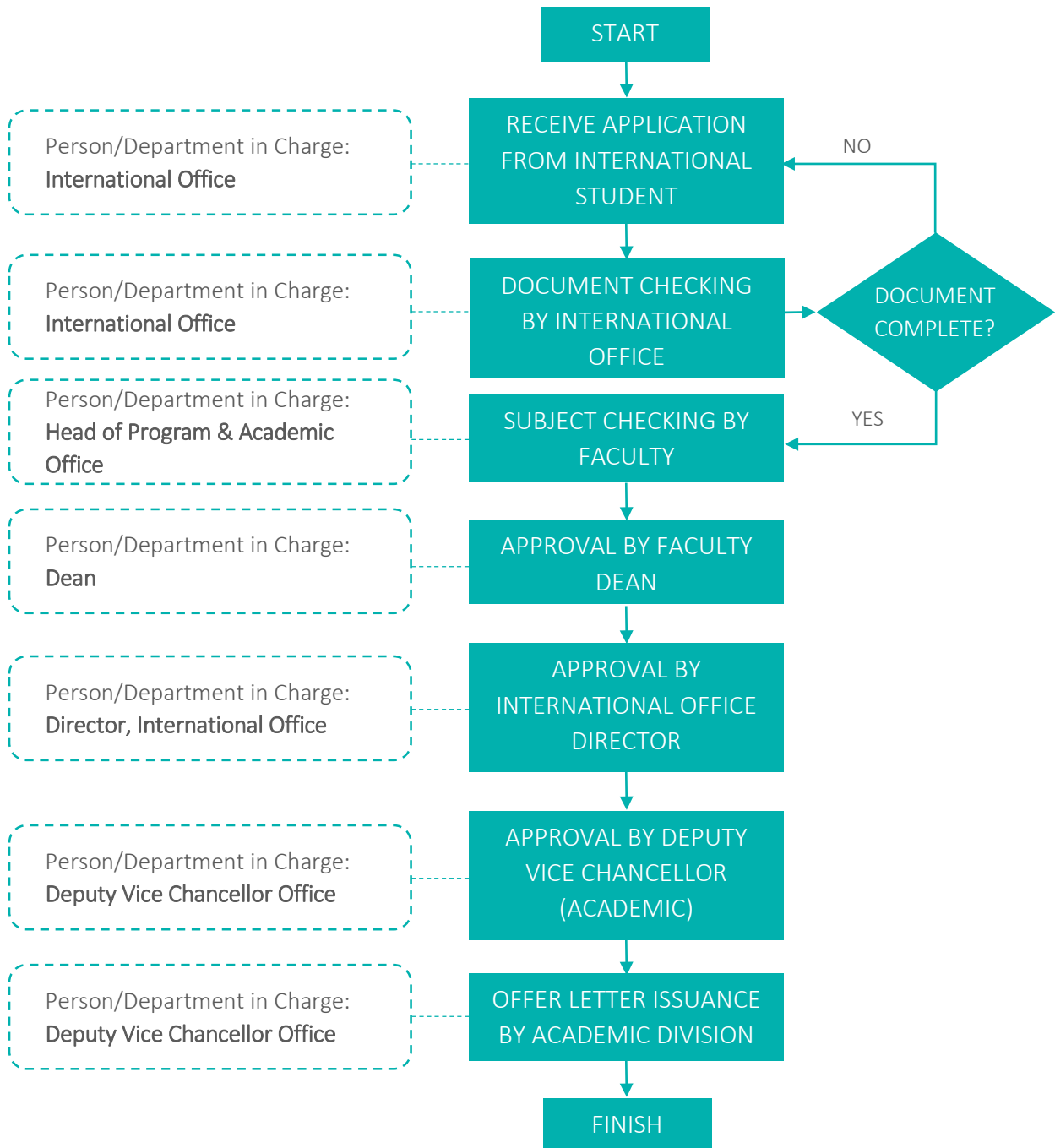
FIM INTERNATIONALIZATION AGENDA

Faculty of Industrial Management (FIM) was established in 2014, our aspiration now is to become a distinguished technological business school. With the integration of business and technology components into the designed curriculum, the academic program at FIM is capable of producing competitive graduates. Our academic programs are geared towards industry requirements that have been accredited by the Malaysian Qualifications Agency (MQA) and other professional bodies such as The Alliance on Business Education and Scholarship for Tomorrow (ABEST21), The Chartered Institute of Logistics and Transport (CILT-UK) and PMI Global Accreditation Center for Project Management Education Programs (GAC). Both UMP local students and incoming international students have the opportunity to gain new global experience by joining the UMP Student Mobility Program. The students get the chance to undergo a process of interaction which will broaden their educational and life experiences for either in a short term duration or long term duration. The mobility program that we offer is as illustrated in the following diagram.

MOBILITY PROGRAM

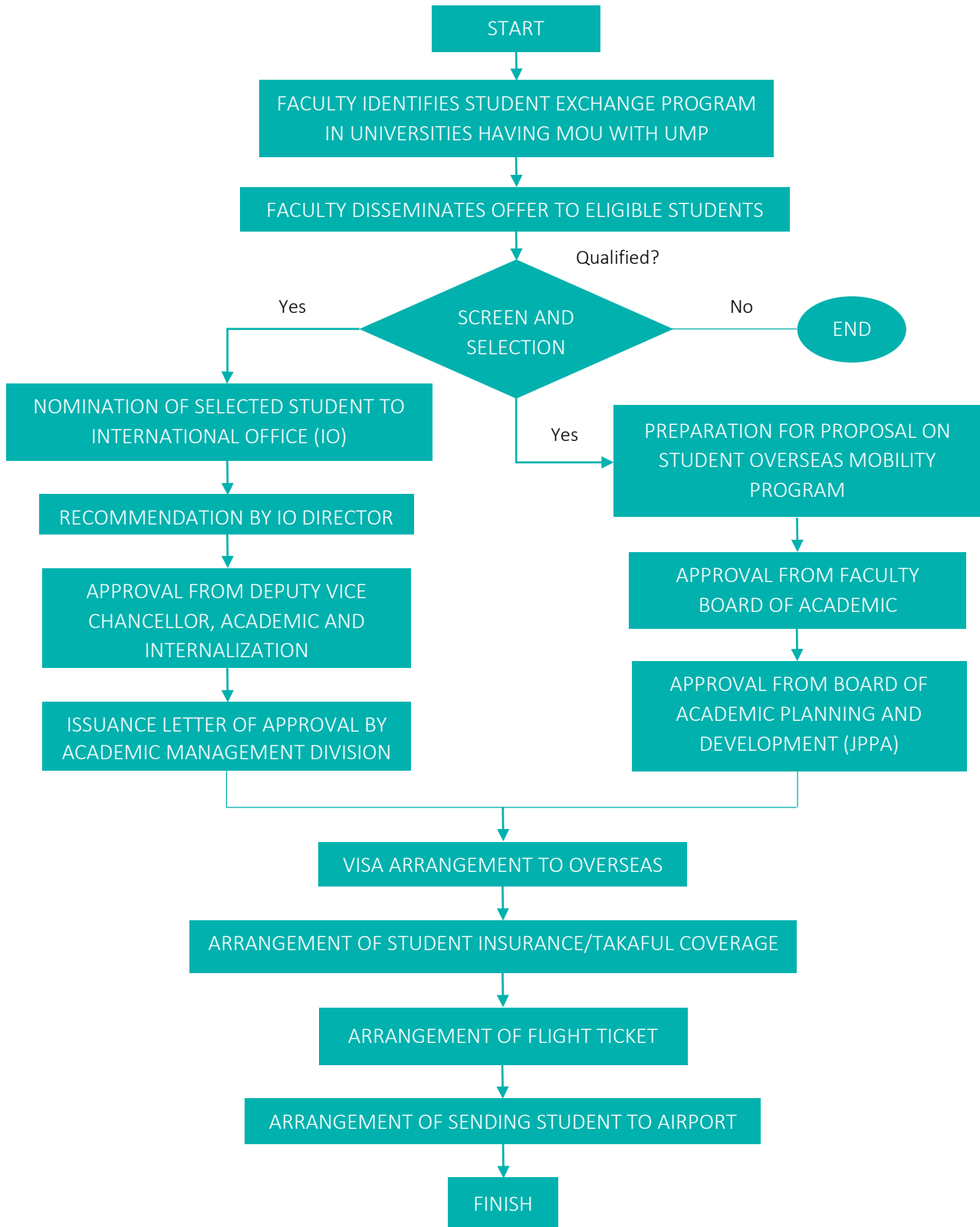
INBOUND MOBILITY

The flow chart for inbound mobility program are as follow



OUTBOUND MOBILITY

The flow chart for outbound mobility program are as follow



CREDIT TRANSFER & COURSE EXEMPTION

This program involves credit transfer that normally done with UMP partner universities. This is to ensure cooperation in registering subject, transferring credit, admission procedure, immigration documentation and financial matters has achieved mutual agreement between both parties. The student needs to stay at the host university for one (1) or two (2) semesters.

The following are the policy for credit transfer:

1) Vertical Credit Transfer

The policy of vertical credit transfer is based on the following conditions:

- (a) The credit transfers from Level 3 MQF (Certificate) to Level 4 MQF (Diploma) is allowed for up to 30% of the total credits of a program that followed or subject to any requirements by the accreditation bodies.
- (b) The credit transfers from Level 4 MQF (Diploma) to Level 6 MQF (Bachelor's Degree) is allowed for up to 30% of the total credits of a program that followed or subject to any requirements by the accreditation bodies.
- (c) Students who are in Level 5 MQF (Advanced Diploma) and also own a Level 4MQF (Diploma) can be considered for credit transfer for a maximum of two (2) academic years of Bachelor's Degree program or subject to any requirements by the accreditation bodies.
- (d) The credit transfer from a higher qualification to a program at a lower qualification is not permitted.

2) Horizontal Credit Transfer

The policy of horizontal credit transfer is credit transfer with grade value based on the following conditions:

- (a) The credit transfer is not permitted for students who has obtained a qualification and would like to further their study for the second time at the same level with the qualification that has been obtained.
- (b) The credit transfer is permitted for students who are undergoing a program and would like to change to another program in the same field with the program that they are currently enrolled in.
- (c) There is no limit to the amount of credit transfer for change of program in the same university.
- (d) The limit for credit transfer for students from other PPT to the University is subject to student residency terms that is at least one (1) residential year or as stipulated by the accreditation bodies.

- (e) The credit transfer (including MPU) is not permitted for students who fail a program and wish to further their study in a different program at the same level.
- (f) The credit transfer can be considered for students who have withdrawn from their study and then wish to resume their study but in a different program at the same level.
- (g) The maximum amount of horizontal credit transfer for MOOC shall not exceed 30% of the total credits for graduation.

Students may apply for credit transfer for courses with the following conditions:

- (a) The course is of a similar program with a program that will be followed; and
- (b) The equivalence of course contents and learning outcomes must not be less than 80%; and
- (c) The horizontal credit transfer that has been approved will be considered in the calculation of GPA and CGPA; and
- (d) The course credit points for the former program must be at least equivalent to the value of the applied credit course. Two (2) or more courses can be combined to get the equivalent credit point; and
- (e) The courses applied for credit transfer must be from programs that have been accredited; and
- (f) All courses that have been taken by students in other PPT during mobility program must have its credits transferred with the equivalent grade.

The maximum amount of credit transfer is as stipulated by the related accreditation bodies.

COURSE EXEMPTION

1. Course exemption will not cause students to obtain credits for courses that are exempted.
2. If the course exemption causes the graduating credits to be insufficient, students have to enroll in other courses to replace the exempted course.
3. International students must or can take MPU courses following current requirements.
4. Students who have experience that is equivalent to courses at the certificate or Diploma level that are approved by the Senate, can be given course exemption.

TRANSFER CREDIT METHOD

- ▶ Students must ensure courses enroll at host university are equivalent courses at student's base university. Course content (syllabus) that is used for transfer credit purposes will be assessed for consideration to transfer credit approval.
- ▶ Approved transfer credits will be recorded in Student Information System.
- ▶ Host university needs to submit final results to students after it has been endorsed by Senate.
- ▶ Transfer credits will only be awarded after students make official application to students and at students satisfactory. Credit transfer application can be done by filling in Credit Transfer Form, and attach with final result and a copy of original transcript from host university.

POLICY FOR CREDIT TRANSFER

VERTICAL CREDIT TRANSFER

CERTIFICATE TO DIPLOMA

The credit transfers from Level 3 MQF (Certificate) to Level 4 MQF (Diploma) is allowed for up to 30% of the total credits of a programme that followed or subject to any requirements by the accreditation bodies.

Condition 01

DIPLOMA TO BACHELOR'S DEGREE

The credit transfers from Level 4 MQF (Diploma) to Level 6 MQF (Bachelor's Degree) is allowed for up to 30% of the total credits of a programme that followed or subject to any requirements by the accreditation bodies.

Condition 02

ADVANCED DIPLOMA

Students who are in Level 5 MQF (Advanced Diploma) and also own a Level 4MQF (Diploma) can be considered for credit transfer for a maximum of two (2) academic years of Bachelor's Degree programme or subject to any requirements by the accreditation bodies.

Condition 03

note: The credit transfer from a higher qualification to a programme at a lower qualification is not permitted.

HORIZONTAL CREDIT TRANSFER

CONDITION 01

The credit transfer is **not permitted** for students who has obtained a qualification and would like to further their study for the second time at the same level with the qualification that has been obtained.

CONDITION 02

The credit transfer is **permitted** for students who are undergoing a programme and would like to change to another programme in the same field with the programme that they are currently enrolled in.

CONDITION 03

There is **no limit** to the amount of credit transfer for change of programme in the same university.

CONDITION 04

The limit for credit transfer for students from other PPT to the University is subject to student residency terms that is **at least one (1) residential year** or as stipulated by the accreditation bodies.

CONDITION 05

The credit transfer (including MPU) is **not permitted** for students who fail a programme and wish to further their study in a different programme at the same level.

CONDITION 06

The credit transfer can be **considered** for students who have withdrawn from their study and then wish to resume their study but in a different programme at the same level.

CONDITION 07

The maximum amount of horizontal credit transfer for MOOC **shall not exceed 30%** of the total credits for graduation.

APPLY WITH CONDITIONS

CONDITION A

The course is of a similar programme with a programme that will be followed;

AND ↓

CONDITION B

The equivalence of course contents and learning outcomes must not be less than 80%;

AND

CONDITION C

The horizontal credit transfer that has been approved will be considered in the calculation of GPA and CGPA;

AND ↓

CONDITION D

The course credit points for the former programme must be at least equivalent to the value of the applied credit course. Two (2) or more courses can be combined to get the equivalent credit point;

AND

CONDITION E

The courses applied for credit transfer must be from programmes that have been accredited;

AND ↓

CONDITION F

All courses that have been taken by students in other PPT during mobility programme must have its credits transferred with the equivalent grade.

VISA APPLICATION PROCEDURE

NOTES FOR STUDENT PASS /VISA APPLICATION:

1. According to the rules and regulations of the Malaysian Immigration Department, all international students are required to have a valid Student Pass in order to study in Malaysia. The government agencies responsible are the Malaysian Immigration Department and the overseas Malaysian diplomatic missions (i.e. Malaysian High Commission, Consulates or Embassies) and Education Malaysia Global Services or EMGS are the private body appointed by the Ministry of Higher Education to process international student visa applications.
2. For students abroad, in order to apply for the student pass, firstly you shall apply Electronic Visa Approval Letter with the reference of student pass (eVAL) to enter Malaysia directly with the Education Malaysia Global Service (EMGS).
3. The Electronic Visa Approval Letter or eVAL is a letter issued by the Malaysian Immigration Department when your visa application is successful. Students from some countries will be able to enter Malaysia with a eVAL while citizens of other countries may need to apply for a Single Entry Visa (SEV) from the nearest Malaysian Embassy.
4. A Single Entry Visa or SEV is an entry visa for non-residents entering Malaysia with the intention of studying. The SEV is obtained after the eVAL has been approved.

FOR STUDENTS ABROAD

1. You should not submit your application for a Student Pass any earlier than 6 months before you intend to come to study in Malaysia. This is because the Electronic Visa Approval Letter (eVAL) which is issued after your student pass application is approved by the Department of Immigration is only valid for 6 months. If you do not enter Malaysia within 6 months, you may need to make a new Student Pass application. Alternatively, you can request for a visa approval extension, which is subject to Immigration approval.
2. It is recommended for you to apply the eVAL 1 month or 2 months before leaving your home country for UMP admission. Please do not issue any flight ticket before the approval is obtained to avoid financial loss.
3. For the student that already had record in applying Electronic Visa Approval Letter(eVAL) / possess student pass previously with any Malaysia Educational Institution, please ensure the record is already cancelled by contacting the previous educational institution before applying new (eVAL) at new institution.
4. You will also be required to fill up Medical Declaration Form for Applicants and send the form back to UMP. Within 7 working days of your arrival in Malaysia, you are required to undergo a post arrival medical screening with any clinic/hospital approved by Ministry of Health, Malaysia. The complete medical report will have to get verification from UMP Medical officer.

5. Once your eVAL is approved, you need to plan your travel to Malaysia.
 - i) Students from non-visa required countries will apply for SEV at Malaysia Representative Office and enter Malaysia by producing the eVAL upon arrival.
 - ii) Students from visa required countries without a Malaysia Representative Office are permitted to enter without a visa. Student must present the Electronic Visa Approval Letter (eVAL) upon entry. Visa on Arrival for Students (VOAS) will be issued at the point of entry.
 - iii) Students from visa required countries which have a Malaysia Representative Office must obtain visa (SEV) prior to their entry into Malaysia. Once your SEV is issued, you will be able to enter Malaysia.
** Students are responsible to check with the Malaysian Representative Office at their home country for visa requirements before entering Malaysia.
6. Once the applicants have received the Electronic Visa Approval Letter (eVAL), student MUST apply for the Single Entry Visa (S.E.V) within 6 months from date of the Electronic Visa Approval Letter (eVAL) at the nearest Malaysia Representative Office (as stated in the approval letter). If the students fail to obtain Single Entry Visa (S.E.V) from Malaysia Representative Office within 6 months from the date of the Visa Approval Letter, student are required to apply new eVAL from UMP
7. The following documents are required for application of SEV:
 - i) eVAL Approval Letter
 - ii) UMP offer letter.
 - iii) Passports (Single Entry Visa will be stamped/ sticker on the student's passport)
8. Please note that the eVAL and SEV are not the Student Pass. Students are responsible for completing both the pre- and post-arrival visa processes in a timely manner.
9. Fees related to Visa Processing and Insurance are excluded from the tuition fees which are fully borne by the students.
10. All the documents required for visa application shall be email to (after successfully submission of application through EMGS Online Application System):

Further information on Visa application and matters related:

Centre for International Relations (ATT : VISA UNIT)
Universiti Malaysia Pahang Lebuhraya Tun Razak
26300 Gambang Kuantan Pahang
Tel : **+609-549 2722/ 2721/ 2728**
Fax : **+609-549 2729**
Email : **cir_vis@ump.edu.my**

COURSES OFFERED

FACULTY OF INDUSTRIAL MANAGEMENT

A typical semester offers three main undergraduate programs and the Master of Business Administration (MBA) program. Here is the curriculum structure of the programs:

BACHELOR OF INDUSTRIAL TECHNOLOGY MANAGEMENT WITH HONOURS

YEAR 1

Principles of Management
Principles of Economics
Management Accounting
Principles of Operation Management
Industrial Psychology
Business Information System
Principles of Marketing
Mathematics of Management

YEAR 2

Statistics for Management
Quality Management
Financial Management
Supply Chain & Logistic Management
Organizational Behaviour
Project Management
Fundamental of Manufacturing Management of Technology

YEAR 3

Production Planning & Control
Quality Control
Research Methodology
Business Law
Strategic Management
Product Development & Innovation
Final Year Project 1
Elective Course

YEAR 4

Final Year Project 2
Elective Course*
Elective Course*
Elective Course*
Industrial Training

*Elective Course

OPERATION MANUFACTURING

Computer Aided Design
ERP Systems
Lean Manufacturing
Manufacturing Technology
Computer Modelling & Simulation
Industrial Control & Automation

SERVICE MANAGEMENT

Customer Relationship Management
Service Management
Knowledge Management
Service Marketing
Innovation Management
Retailing

BACHELOR OF PROJECT MANAGEMENT WITH HONOURS

YEAR 1

Principles of Management
Principles of Economics
Project Management
Mathematics of Management
Industrial Psychology
Business Information System
Principles of Marketing

YEAR 2

Statistics for Management
Quality Management
Project Financial Management
Project Estimating & Budgeting
Organizational Behaviour
Procurement Management
Integrated Project Management 1
Integrated Project Management 1

YEAR 3

Project Control
Strategic Management
Research Methodology
Project Risk Management
Stakeholder Management
Project Portfolio Management
Final year Project
Elective course

YEAR 4

Final Year Project 2
Elective Course*
Elective Course*
Elective Course*
Industrial Training

*Elective Course

CONSTRUCTION ELECTIVE

Construction Management
Construction Technology
Construction Drawings & Measurement
Construction Economics
Industrial Safety and Health
Construction and Sustainability Development

INFORMATION TECHNOLOGY ELECTIVE

Introduction to Software Engineering
Introduction to Computer Network & Security
System Analysis and Design
Integrated Media Application for Business
Business Analytics
E-Business Strategy and Practice

**BACHELOR OF BUSINESS
ENGINEERING
WITH HONOURS**

YEAR 1

Principles of Management
Business Law
Financial Accounting
Introduction to Computer Science
Technical Mathematics
Fundamentals of Project Management
Cost Accounting
Engineering Mechanics
Technical Design/CAD
Calculus

YEAR 2

Quality Management
Industrial Engineering
Project Financial Management
Supply Chain Management
Organizational Behaviour
Systems & Business Process Management
Applied Statistics
Individual Field Project-Business & Engineering

YEAR 3

Operations Research
Elective 1 (Business)
Elective 1 (Engineering)
Elective 2 (Business)
Elective 2 (Engineering)
Industrial Training

YEAR 4

Elective 3 (Business)
Elective 3 (Engineering)
Elective 4 (Business)
Elective 4 (Engineering)
Elective 5 (Business)
Elective 6 (Business)
Individual Study Project
Thesis

*Elective Course

BUSINESS ELECTIVES:

Supply Chain Control & Management Control Systems
Lean Management
Simulation Game
Technical Planning Case
Production Accounting & Control
Advanced Project Management & Control
Innovation & Technology Management
HR Management
International Business Environment

ENGINEERING ELECTIVES

Intra-Logistics
Distribution Logistics
Warehouse & Inventory Planning
Production Planning & Methods
Technical Applications & Machines
Materials Science
Product Engineering
Electrical Drives
International Transport Logistics
Database Systems
Sustainability/Energy Efficiency
Power Management (Electrical Grids)

SEMESTER I

Research Methodology
Managerial Economics
Governance, Risk Management & Control
Strategic Marketing

SEMESTER II

Managerial Accounting
Operation Management
Leadership and Organizational Behavior
Entrepreneurship
Financial Management
Project 1

SEMESTER III

Project 2
Strategic Management
#Elective 1
#Elective 2
#Elective 3

**MASTER OF
BUSINESS
ADMINISTRATION**

*Elective Course

Technology Management elective:

Knowledge Management
Project Management
Product Management
Innovation Management
Business Analytics for Decision Making

Business Engineering elective:

Service Management
Supply Chain Management
Logistic Management
Risk Management
Business Analytics for Decision Making

Engineering Management elective:

Lean Management
Occupational, Safety and Health
Sustainable Management
Total Quality Management
Business Analytics for Decision Making

Bioeconomy elective:

Product Development and Commercialization
Project Management in Biobusiness
Contemporary Issues in Bioeconomy
Supply Chain in Biobusiness
Global Biobusiness Innovation
Business Analytics for Decision Making

SUMMER PROGRAM

UMP Summer School, under Faculty of Industrial Management offers various unique programs. The programs offer hands-on experiences in the specific course chosen by the participants from all over the world. Additionally, the participants will enjoy cultural explorations and interaction with the locals that enhance their understanding of the diversity, which ultimately may contribute to their global competency. The UMP entertaining and effective Summer School programs are managed by our dedicated professionals and fun buddies!

Some of the pictures taken from our previous summer program



Student practicing traditional Pahang dance



Trip to Kuantan beach



Industrial visit to Petronas Chemical MTBE



Industrial visit to Kuantan Port Consortium



A session in FIM Learning Factory



A session in class



Closing ceremony where students perform Pahang traditional dance with UMP students

Table 1: Example of FIM Summer Program Schedule

WEEK 1					TIME	WEEK 2				
DAY 1	DAY 2	DAY 3	DAY 4	DAY 5		DAY 6	DAY 7	DAY 8	DAY 9	DAY 10
REGISTRATION & BREAKFAST	SLOT 1	SLOT 4	SLOT 7	SLOT 10	08 30 10 30	FIELD VISIT & STUDENT INTERACTION	SLOT 13	SLOT 16	INDUSTRIAL VISIT	STUDENTS PRESENTATION, EXPERIENCE SHARING & CERTIFICATE DISTRIBUTION
INAUGURATION	SHORT BREAK			10 30 11 00	SHORT BREAK					
PROGRAM BRIEFING	SLOT 2	SLOT 5	SLOT 8	SLOT 11	11 00 13 00		SLOT 14	SLOT 17		
LUNCH BREAK				13 00 14 30	LUNCH BREAK					
CAMPUS TOUR	SLOT 3	SLOT 6	SLOT 9	SLOT 12	14 30 16 30		SLOT 15	SLOT 18		
REFRESHMENT & ADJOURNMENT				16 30	REFRESHMENT & ADJOURNMENT					

SUMMER PROGRAM BY CLUSTER

The summer program can be tailored according to the needs of the visiting university. The following are the program clusters that prospective university or agency can opt:

- ▶ Business analytics
- ▶ Strategic management
- ▶ Digital marketing
- ▶ Entrepreneurship

In the case of any specific program being requested by the visiting university, matters can be forwarded to the Internationalization Coordinator of the faculty, listed at the end of this e-book.

ACCOMODATION

The university provides a decent accommodation for visiting students. This cozy accommodation is maintained by Universiti Malaysia Pahang Holdings (UMPH), a subsidiary under UMP. There are 3 rooms with single and double bed that can accommodate 6 students in a single unit house.



CONTACT INFORMATION

Any enquiries can be forwarded to the Internationalization Coordinator Faculty of Industrial Management

Name: Dr. Muhammad Ashraf Bin Fauri @ Fauzi

Contact No: +603549 3241/ +60133005169

Email: ashrafauzi@ump.edu.my

Address: Faculty of Industrial Management, Universiti Malaysia Pahang, Lebuhraya Tun Razak, 26300, Gambang, Pahang, Malaysia



Education is the passport to the future, for tomorrow belongs to those who prepare for it today.



- *Malcolm X*